

MALONE[®]

CHANGING THE WAY YOU GET THERE

MPG449

1/2018

MPG449 Bunk Kit

for your

Malone MicroSport[™] Trailer

Assembly & Installation Instructions



Installation & Loading Instructions - Please Read Before Beginning

Veuillez lire les instructions avant d'entreprendre l'installation et le chargement

IMPORTANT WARNING: All vehicular transports are potentially hazardous. Any person(s) using Malone products are personally responsible for following the given directions for use and/or installation and accepts full responsibility for any and all damages or injury of any kind including death, which may result from their use and/or installation.

It is critical that all Malone racks and accessories be properly and securely attached to your vehicle. Improper attachment could result in a serious accident, and could cause serious bodily injury or death to you or to others. You are responsible for securing the racks and accessories to your car, checking the attachment's prior to use, and periodically inspecting the products for adjustment, wear, and damage.

You must read and understand all of the instructions and cautions supplied with your Malone products(s) prior to installation or use. If you do not understand all of the instructions and cautions, or, if you have no mechanical experience and are not thoroughly familiar with the installation procedures, you should have the product installed by a professional installer.

MISE EN GARDE IMPORTANTE: Tout transport d'un chargement sur le toit d'un véhicule est potentiellement dangereux. Une personne qui utilise les produits Malone doit suivre sans faute les instructions d'installation et d'utilisation fournies et assume l'entière responsabilité pour tout dommage ou toute blessure, y compris un décès, pouvant résulter d'une telle installation ou utilisation.

Il est essentiel de fixer correctement et solidement les supports et les accessoires à votre véhicule. Une mauvaise installation ou attache pourrait provoquer un accident, entraîner des blessures corporelles graves à vous et aux autres et même causer la mort. Vous avez la responsabilité de fixer solidement les supports et les accessoires à votre véhicule, de vérifier l'installation avant l'utilisation et d'inspecter périodiquement le produit pour déceler tout signe d'usure ou de dommage ou tout problème d'ajustement.

Vous devez lire et comprendre les instructions et les mises en garde fournies avec les produits Malone avant l'installation et l'utilisation. Si vous ne comprenez pas les instructions et les mises en garde ou si vous ne possédez pas d'expérience en mécanique et ne connaissez pas à fond les procédures à suivre d'installation, vous devriez faire monter et poser le produit par un installateur professionnel.

MALONE

CHANGING THE WAY YOU GET THERE

Important Note

Product Warranty & Registration Form

All information is confidential and used exclusively by MALONE only.

Dear Customer,

Thank you for your purchase of a Malone Product.

In order to be eligible for the Malone Warranty program, we ask that you contact us by email, telephone or online at one of the following: With-in 30 days of purchase. You can also mail this letter back to the address at the bottom.

- Online: www.maloneautoracks.com
- Tel: 1-207-774-9100 x215
- Email: Technical@maloneautoracks.com

We will require the information below.

Here is the information collected:

First Name: _____

Last Name: _____

Address: _____

Address2: _____

City: _____

State: _____

Zip: _____

Country: _____

Email: _____

Phone: _____

Product Description/Name: _____

Product MPG# or Serial # _____

Date Purchased: _____

Store Where Purchased: _____

Purchase Price: _____

Thank you for choosing Malone!

81 County Rd. Ste 1, Westbrook, ME 04092

P: 207.774.9100 F: 207.615.0551

E: sales@maloneautoracks.com W: www.maloneautoracks.com

MALONE[®]

CHANGING THE WAY YOU GET THERE

Hardware Kit (1)



Load Bars (2) and Brackets (4)

7' Carpeted Bunks (2)



D-Rings (4)



Load Straps (2)

Changing the load bars

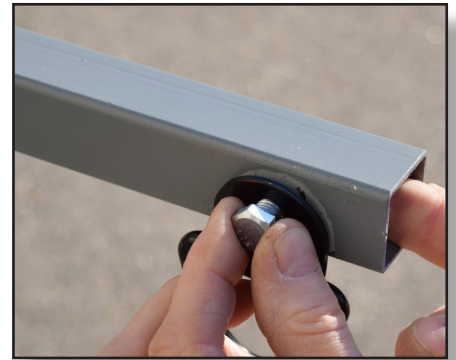
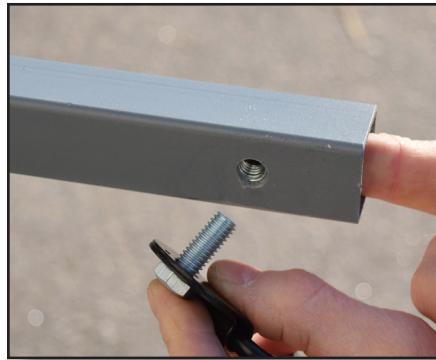
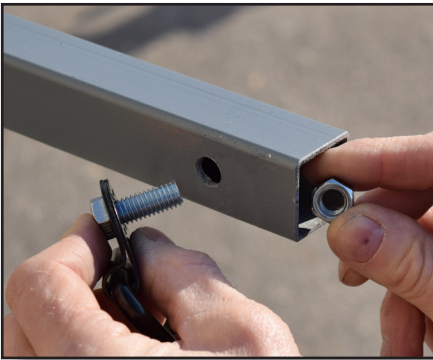
- 1). Remove the bolts holding each black bracket to the support tube and remove Xbars from trailer. See figure 1.
- 2). Slip the new load bar brackets over the new load bars (as shown) and loosely install the two small bolts / nuts through each bracket trapping the load bars inside the brackets. See figure 2.



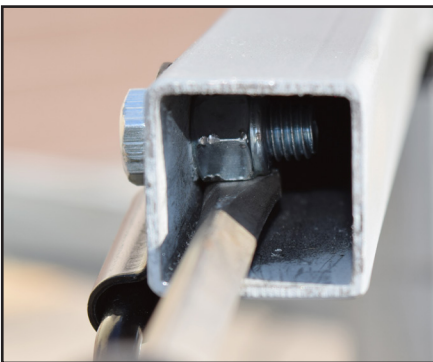
- 3). Install and hand tighten the bolts holding each bracket to the support tube. See figure 3.
- 4). Center the load bars to the trailer, then tighten all 8 bracket bolts. See figure 4.



5). Install the D-Rings to the ends of the load bars. Slide a nylon lock nut into the open end of the load bar and align with the hole. INSERT and hand tighten the bolt.



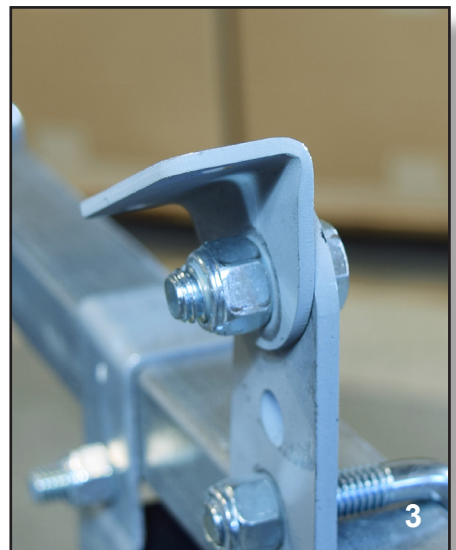
To secure, Slip a screwdriver under the nylon nut to hold it in place as you fully tighten the bolt with a 9/16 socket wrench. Complete the cross bars with the new end caps.



Bunk Assembly

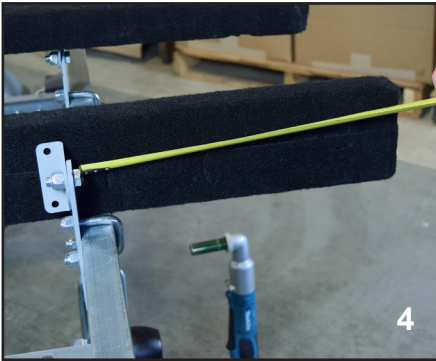
1). With the new load bars installed, use one U-bolt to hold the adjustable mounting plate in place. Secure with the nylock nuts. See figure 1.

2). Add the swivel bracket to the top of the mounting plate, add nylock nut. Tighten until almost fully tight. We'll adjust this later to match the hull shape and then tighten fully. See figure 2,3. Repeat steps 1 & 2 for the other mounting plate(s).



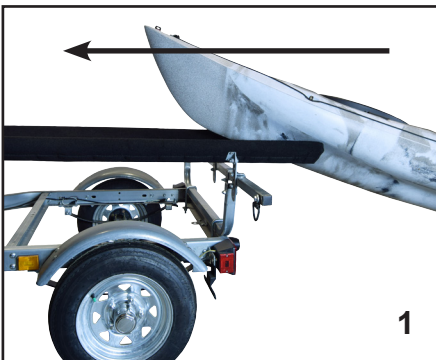
Bunk Assembly Cont.

- 1). Place the carpeted bunk in place and measure the over-hang past the swivel bracket and make the distance equal on both ends. See figure 4.
- 2). Use the wood screws and secure fully. See figure 5 & 6. Repeat for second bunk to complete installation.



Loading & Bunk Adjustments

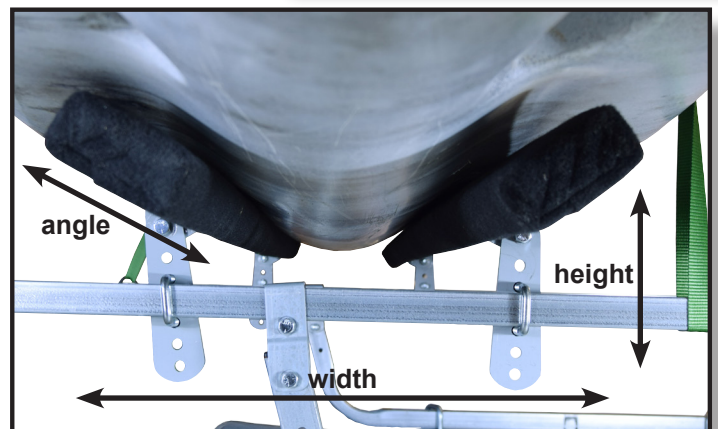
- 1). Gently place the bow of the kayak onto the bunks from the rear of the trailer. Continue to hold the kayak to prevent slippage. See figure 1.
- 2). Walk back to the stern of the kayak. Lift the kayak and walk it forward sliding across the bunks. Centering the kayak.
- 3). With the kayak now loaded onto the bunks, secure the kayak with the green load straps by running them through the D-ring on the end of loadbar, over the kayak and then under/around the loadbar. Thread the free end of each strap back up and through the buckles. Pull down to tighten.



NOTE: When loading the kayak for the first time we'll need to make some final adjustments so the bunks match and capture the hull properly.

Look underneath and adjust the width, height & swivel bracket as needed for your kayak. Make sure to double check all nuts are now fully secure and tight.

Every kayak scenario (hull shape) is different and these are general guide lines for installation.





Limited Five (5) Year Warranty

The Malone Auto Racks (Malone) Limited 5 Year Warranty covers certain Malone-brand products that have been specifically identified for inclusion in the program. This warranty is in effect for five (5) years, from the time of sale, for the original retail purchaser of the product. This warranty is terminated after five years from the date of purchase, or, when the original retail purchaser sells or otherwise transfers the product to any other person or entity during the five year warranty period.

Subject to the limitations and exclusions described in this warranty, Malone will remedy defects in materials and/or workmanship by repairing or replacing, at its option, a defective product without charge for parts or labor. Malone may elect, at its option, not to repair or replace a defective product but rather issue to the original retail purchaser a refund equal to the purchase price paid for the product, or credit to be used toward the purchase of a replacement Malone product.

This warranty does not cover, and no warranty is given for defects or problems caused by normal wear and tear, which includes, but is not limited to, surface (aesthetic) metal corrosion, scratches, dents, deformities, accidents, unlawful vehicle operation, or any modification of a product not performed or authorized in writing by Malone.

In addition, this warranty does not cover problems resulting from conditions beyond Malone's control including, but not limited to, theft, misuse, overloading, or failure to assemble, mount or use the product in accordance with Malone's written instructions or guidelines included with the product provided to the original retail purchaser.

No warranty is given for Malone products purchased outside of the continental United States, Canada and Mexico.

If the product is believed to be defective, the original retail purchaser should contact the Malone dealer from whom it was purchased, who will give the original retail purchaser instructions on how to proceed. If the original retail purchaser is unable to contact the Malone dealer, or the dealer is not able to remedy the defect, the original retail purchaser should contact Malone by email at technical@maloneautoracks.com.

In the event that the product must be returned to Malone, a technician at the email address above will provide the original purchaser with return shipping instructions. The original purchaser will be responsible for the cost of mailing the product to Malone. In order to be eligible to receive any remedy under this warranty, a copy of the original purchase receipt, a description of the defect and a return address must be provided.

Disclaimer of Liability

Repair or replacement of a defective product, or the issue of a refund or credit (as determined by Malone) is the original retail purchaser's sole and exclusive remedy under this warranty. Damage to original purchaser's vehicle, cargo, or property, and/ or to any other person or property is not covered by this warranty.

This warranty is expressly made in lieu of any and all other warranties, express or implied, including the warranties of merchantability and fitness for a particular purpose.

Malone's sole liability to any purchaser is limited to the remedy set forth above. In no event will Malone be liable for any direct, indirect, consequential, incidental, special, exemplary, or punitive damages, or, for any other damages of any kind or nature (including but not limited to, lost profits, lost income or lost sales).

Some states do not allow the exclusion or limitation of incidental or consequential damages, so the above limitations may not be applicable.

In addition, all vehicular transports are potentially hazardous. Any person(s) using Malone products are personally responsible for following the given directions for use and/or installation and accepts full responsibility for any and all damages or injury of any kind including death, which may result from their use and/or installation.