

MALONE[®]

ATTENTION CUSTOMERS

Thank you for your recent purchase of a Malone trailer.

Please inspect all parts and hardware bags prior to assembly. If you encounter any missing components please contact us at:

Email: technical@maloneautoracks.com

OR

Phone: (207) 774 - 9100 X215

**Business Hours: Monday-Friday
9am- 5pm**

Thank you from all of us at Malone



**MPG494
REV2**

CHANGING THE WAY YOU GET THERE

MALONE

CHANGING THE WAY YOU GET THERE

Important Note

Product Warranty & Registration Form

All information is confidential and used exclusively by MALONE only.

Dear Customer,

Thank you for your purchase of a Malone Product.

In order to be eligible for the Malone Warranty program, we ask that you contact us by email or online at one of the following: With-in 30 days of purchase. You can also mail this letter back to the address at the bottom.

- Online: www.maloneautoracks.com
- Email: Technical@maloneautoracks.com

We will require the information below.

Here is the information collected:

First Name: _____

Last Name: _____

Address: _____

Address2: _____

City: _____

State: _____

Zip: _____

Country: _____

Email: _____

Phone: _____

Product Description/Name: _____

Product MPG# _____

Date Purchased: _____

Store Where Purchased: _____

Purchase Price: _____

Thank you for choosing Malone!

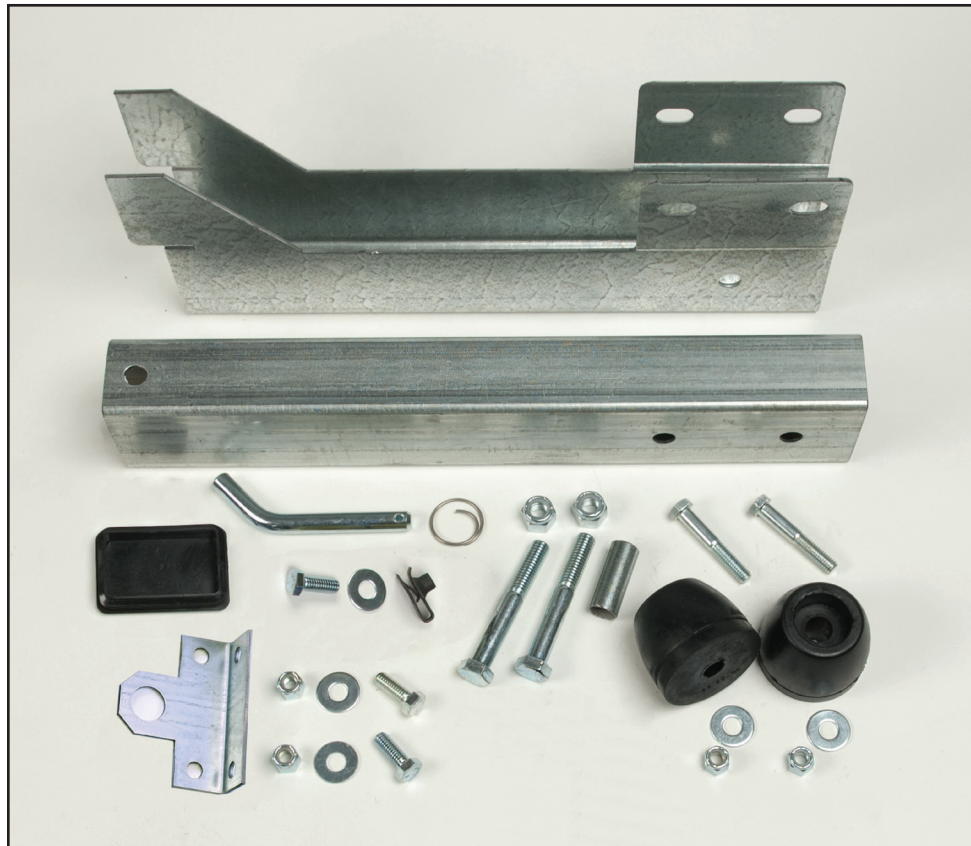
81 County Rd. Ste 1, Westbrook, ME 04092

P: 207.774.9100 F: 207.615.0551

E: sales@maloneautoracks.com W: www.maloneautoracks.com

Malone MicroSport Trailer™ Retractable Tongue Kit

Model MPG494 Instructions



Take a few moments and read through these instructions to familiarize yourself with the step by step assembly process before you begin turning wrenches.

Lets get started!!

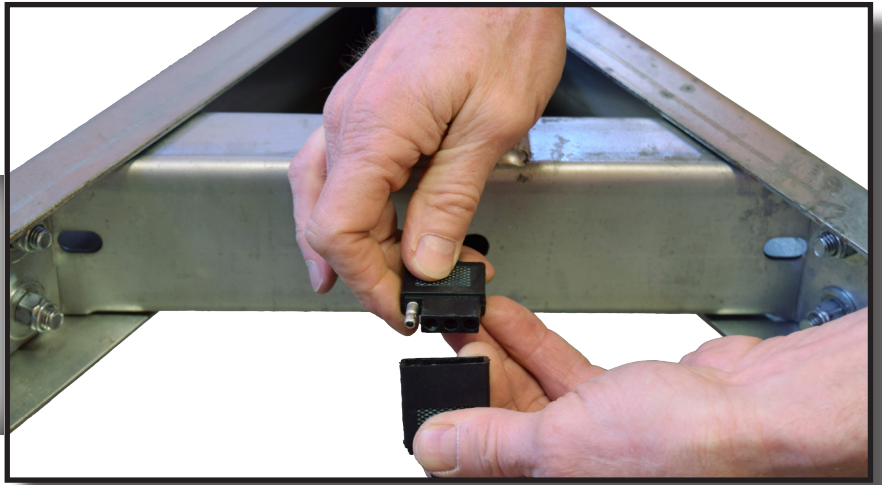
Required Tools:

· (2) 3/4" Wrenches · (2) 9/16" Wrenches

*Visit us at maloneautoracks.com
for more fine products and accessories.*

Assembly:

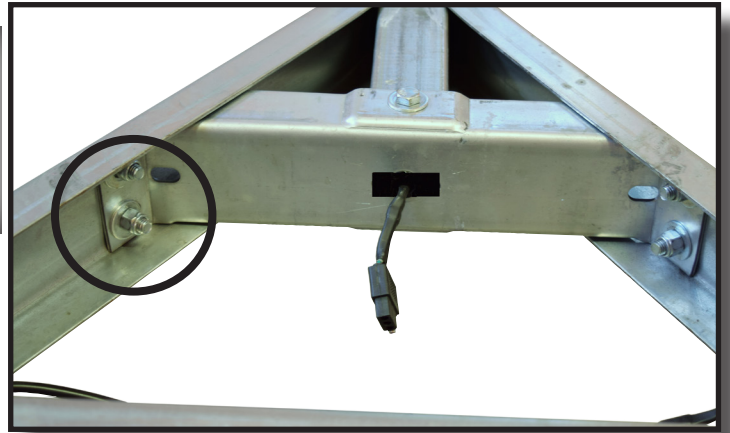
1. Begin by unplugging the wire harness at the back of the tongue.



2. Loosen and remove the 3 large bolts that secure the tongue to the trailer frame. Keep the washers for re-use. Set the 3 bolts and 3 nuts aside, they will NOT be re-used.



3. To free the tongue so it can be pulled out from between the frame rails, loosen the two bolts securing one end of the short cross member. One side only is enough.



4. Push the wiring back into the tongue, then carefully pull the tongue forward and out of the frame.

5. Slide the short tongue tube into the frame until the hole of the top tube clears the frame rails.



6. With its threaded side to the inside, slip the clip nut over the hole on top of the short tongue. Then slide the short tongue back into the cross brace and install the bolt and washer into the clip nut.

NOTE: NOW GO BACK AND RE-TIGHTEN THE CARRIAGE BOLTS FROM STEP 3



7. Position the tongue bracket under the frame, then slide it straight back to engage the rear notch into the short cross member.



8. Re-using the original washers on both sides, slide a new 1/2" bolt through the rear hole.

9. Re-using the original washers on both sides, slide a new 1/2" bolt through the forward hole AND through the 1-2" spacer and out the other side.



10. Install the two new 1/2" locknuts and hand tighten only.

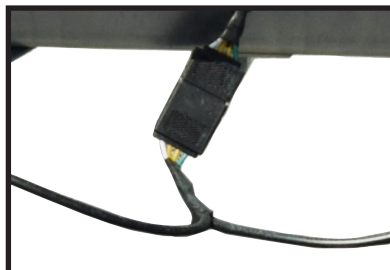
11. Install the tube end plug into the open end of the short tongue tube.



12. Tuck the rear end of the wiring harness into the end of the tongue, then slide the tongue into the slider and align one of the two holes, either is fine. Then slide the 1/2" hitch pin through. Install the circle clip onto the end of the 1/2" pin and rotate it to lock in place.



13. With the tongue installed reconnect the wiring harness and using the provided clips secure the wire to the inside of the frame channel as shown.



14. Bolt the rubber floor pads onto the rear cross member. Don't over tighten



15. Mount the tongue slide stop to the inside center of the rear cross member. Nuts on the inside, bolts and washers on the outside.



Tips for Safe Use:

To Retract the Tongue:

- 1) With the trailer horizontal, disconnect the wiring connector at the rear of the tongue.
- 2) Remove the hitch pin.
- 3) Slide the tongue back until the hole in the tongue aligns with the hole in the tongue stop.
- 4) Insert the hitch pin from the top as shown to the right and install the ring clip.



To Extend the Tongue:

- 1) With the trailer horizontal, remove the hitch pin from the tongue stop.
- 2) Pull the tongue forward until one of the hitch pin holes is aligned.
- 3) Insert the hitch pin, install the ring clip.
- 4) Connect the wiring connector.

Storing the Retracted Trailer: With the tongue retracted, the Malone MicroSport Trailer can be stored in a much smaller space either horizontally or vertically. When stored vertically always lean the trailer against a stationary surface. NEVER leave a vertical trailer without securing the trailer by some means such that it cannot fall over if accidentally bumped. If the trailer were to fall over it has sufficient weight to cause serious damage to property, personal injury or death.

